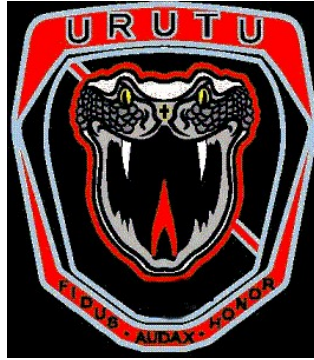


URUTU ENGINE COVER WITH LED ASSEMBLY (AUDI R8 V10 2010- PRESENT)



INSTALLATION INSTRUCTIONS

Required / recommended Tools:

- Socket Driver or electric drill
- Allen/Hex Wrench various sizes
- Small Flashlight
- Hydraulic jack, ramps and/ or Jack-stands
- Gloves (optional)

Tips & Tricks:

- Installation process is simple and can be performed by one person in a short amount of time. However, additional help can expedite the process.
- Ensure you have the tools required before embarking on this project
- The rear of the vehicle will need to be raised to access and remove the bottom tray, ensure the parking brake is on, vehicle is in gear and wheel chucks are in place before getting the vehicle raised
- The use of personal protective equipment, such as gloves, eye protection and other, is highly recommended
- It is advisable to perform this installation when the engine is cold, although this is not a must
- The assembly includes 03 sets of mesh inserts, (Red, Black and Silver) that can be swapped at will by unbending/bending the ends of each insert (use gloves and pliers to perform)

Installation steps:

- 1) Familiarize yourself with the components of the URUTU engine cover with LED assembly:
 - A) Plastic tray (CF look) with metal mesh inserts, 03 sets are included (Black, Red and Silver)
 - B) Ground end of power cable (shortest of the two wires with a circular terminal)
 - C) Positive end of power cable (longest of the two wires with a circular terminal)
 - D) Infrared controller box
 - E) Antenna
 - F) Accessory pack (Remote control, zip ties, nut, and plastic cap)



2) Raise the rear of the vehicle, remove the bottom tray (closest to the air diffuser)



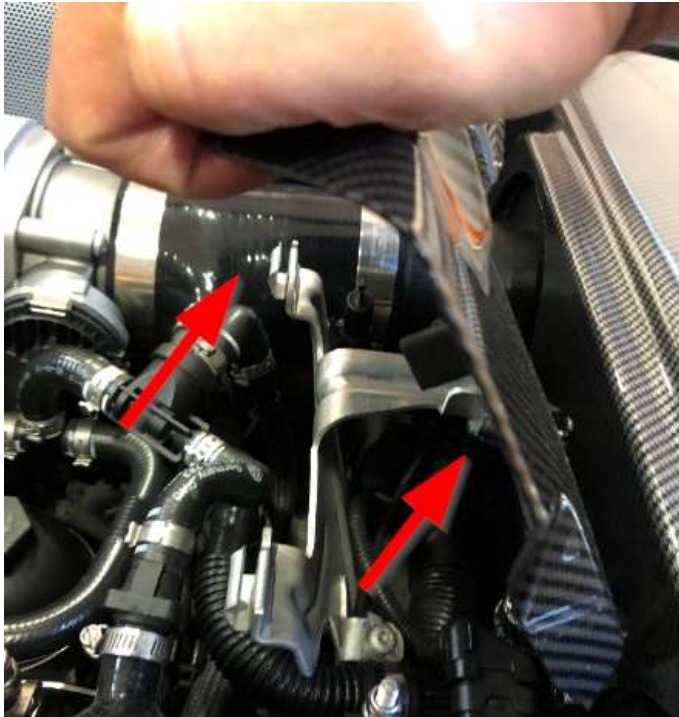
3) Identify the alternator, which can be easily seen on the left-driver's side once tray is removed, then remove the plastic cap on the positive side (it pops right out, its also possible there is not cap present and that's okay)



4) Remove and put aside the OEM metal mesh (it is held in place by 05 hex screws, be careful not to drop them while removing them)



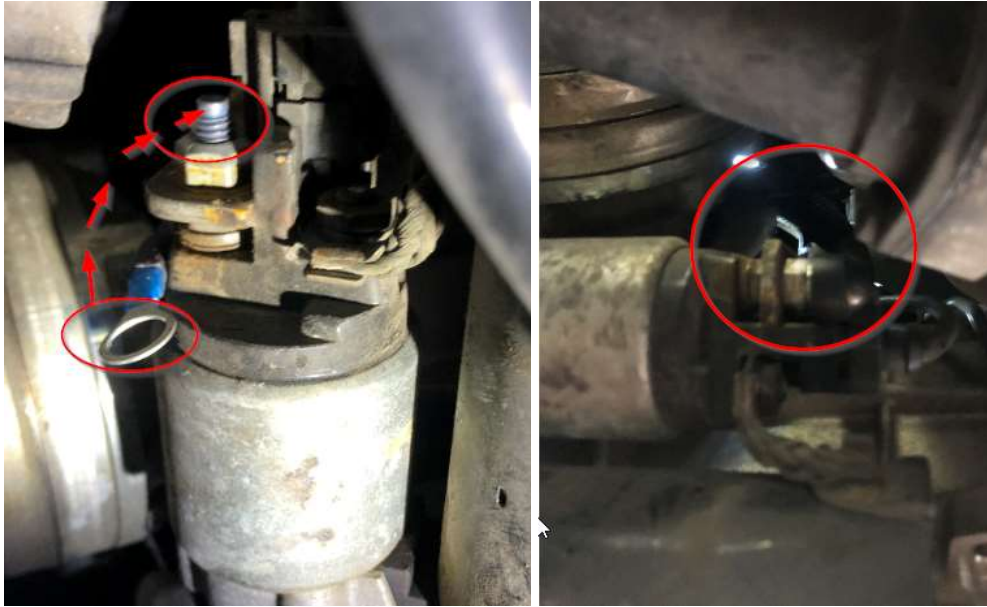
- 5) Remove and put aside the vanity plate (FSI V10) by pulling upwards (it is held in place by pressure clips)



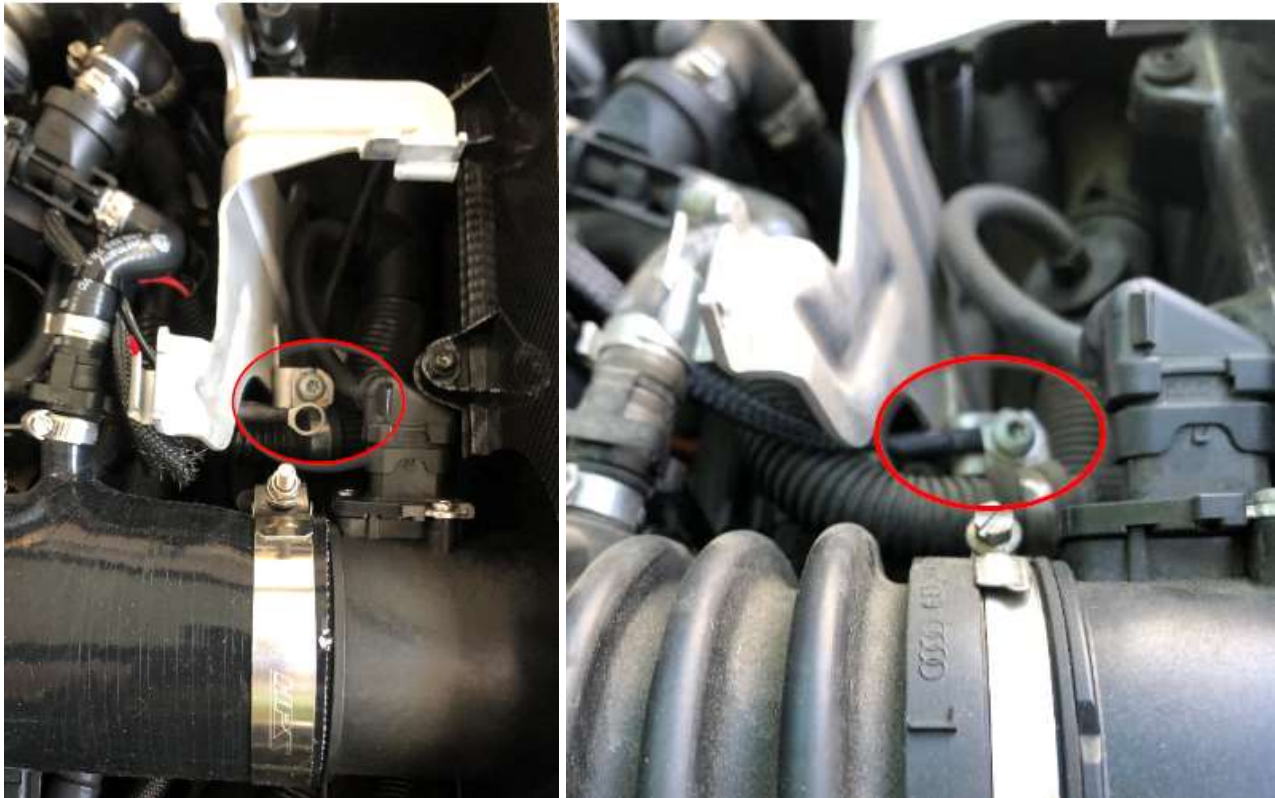
- 6) Take the positive end of the power cable and route it under the metal bracket that holds the vanity-V10 plate and push it towards the rear of the vehicle trying to reach the alternator (you can place a flashlight around the alternator to guide you or use a hanger or flexible wire to snake it through)



- 7) Once the positive end of the power cable is visible grab it, place the circular terminal over the exposed thread of the positive side of the alternator, secure it with the nut provided and cap it with the supplied plastic cap (in the event the stock cap is missing)



- 8) Take the ground wire (B – shortest end of the power cable) and secure it with the existing screw on this bracket



- 9) Connect the power cable to the IR control box and using the supplied zip ties secure the IR box and the antenna to the vacuum line as seen on the images below; then Secure the URUTU engine cover to the 5 mounting points using the OEM hardware



- 10) Use the Remote control to operate the test the LED functions

Before using the wireless remote control, unplug the remote control battery insulation film, the following is a description of each key function. Remote Control Instructions: +/--KEY : monochrome brightness adjustment/mode change speed adjustment.
 ON/OFF KEY: wireless remote control power switch
 Cyclic operation JUMP3/JUMP7/FADE3/FADE7
 KEY: JUMP3/7 3/7 color loop beating cycle
 FADE3/7 3/7 color gradient.
 Voice Control 1/2/3/4 Selection Key : Four kinds of seven-color light with automatic voice changes cycle function.

Remote control function description:

Adjust brightness		Close Key
Adjust speed in voice-activated mode		3 color / 7 color gradient
3 color selection keys		Different Music Voice Control Patterns.
3 color / 7 color jump		

Note: Open ON key before using

- 11) Put back the V10 vanity plate and bottom tray
 12) End

